



COPYRIGHT © 2026 BOART LONGYEAR. ALL RIGHTS RESERVED.

OVERBURDEN TOOLING

DRIVE DRILLING

03/2026



DRIVE DRILLING SYSTEM



The simple way of Overburden Drilling. The drill string consists of a flushing head, single casing without inner string and a drive bit. It is driven into the soil with percussion and minimum rotation. A variety of drive bits are available, including cross bits for rotary percussive drilling. The drive bit is normally left in the hole when the drill string gets extracted.

Applications:

Suitable only in soft ground conditions with small amount of boulders.

Drive Drilling systems are primarily used in sandy soils and soft clays.

Drive Drilling methods are: Displacement drilling methods (without flushing) in non cohesive soils, using a Percussion Head to drive and rotate the drill string with lost Point or lost Bit.

On reaching the required depth, the Point of Bit are ejected (lost), leaving a cleanly cased hole for subsequent installation of an anchor, injection etc. or in denser ground formations:

Displacement drilling methods with flushing support (Air / Water) via a Drive Flushing Head.

DUPLEX DRILLING SYSTEM



DRILL STRING COMPONENTS



1	FLUSHING HEAD
2	DRIVE ADAPTER
3	CASING
4	DRIVE SHOE
5	DRIVE BIT

SYSTEM AND COMPONENTS



DRILL HEAD: SINGLE HYDRAULIC DRIFTER

Flushing:	None or external to casing
Casing:	Rotary/percussive, nipple or friction welded
Bit:	Lost bit left in hole
Typical thread direction:	Left
Diameter offering:	From 89mm (3.5") to 152.4mm (6")

GROUND CONDITIONS

Gravel, soil, sand, limited boulders and other easily-displaced ground formations

SYSTEM FEATURES

- Single casing system
- Bit options with non-return valves for use in high water areas

FLUSHING HEAD (1)

Drive drilling flushing heads allow for the introduction of flushing media into the drive drilling string. Flushing heads are selected to match the shank on the hydraulic drifter as well as the casing diameter and casing thread being utilized.

DRIVE ADAPTER (2)

Adapts the different casing sizes and casing thread to the flushing head.

CASING (3)

Drive drilling systems utilize rotary percussive casing. Casing is either friction welded male/female construction or female/female casing with nipple connections.

DRIVE SHOE (4)

Drive drilling shoes mount onto the first string of casing and hold the drive drilling bit. They are offered in a variety of designs to engage with the drive drilling bit.

DRIVE BIT (5)

Drive drilling bits are designed to be lost bits which are left in the hole once the drilling depth is reached. They are available with flushing holes, one-way valves, and tungsten carbide inserts.

DRILL STRING COMPONENTS- FLUSHING HEAD COMPLETE



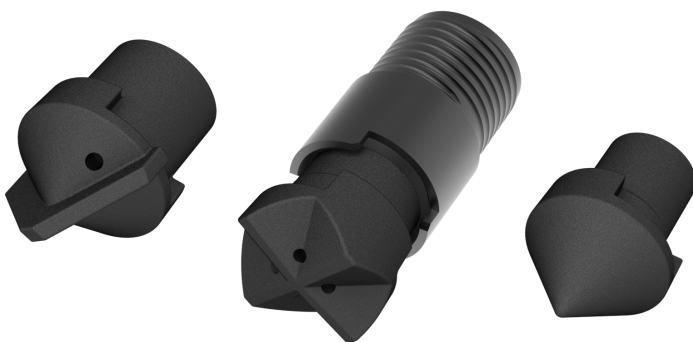
RETAINING PART: Prevents the twisting of the flushing ring.

FLUSHING RING: Brings in the flushing and grouting media.

FLUSHING BODY: To match with the hydraulic drifter shank on the drill and to match the drive adapter.

DRIVE ADAPTER: To match with the flushing body. Connection for casing

DRILL STRING COMPONENTS- DRILLING TOOLS



DRIVE BITS: Various designs are available pending on ground conditions.



GLOBAL HEADQUARTERS
BOART LONGYEAR
2455 SOUTH 3600 WEST
SALT LAKE CITY, UT 84119
UNITED STATES OF AMERICA
INFO@BOARTLONGYEAR.COM

TEL: +1 801 972 6430
FAX: +1 801 977 3374

CANADA
BOART LONGYEAR
2442 SOUTH SHERIDAN WAY
MISSISSAUGA, ONTARIO
CANADA L5J 2M7
INFO@BOARTLONGYEAR.COM

TEL: +1 905 822-7922
FAX: +1 905 822-7232

ASIA PACIFIC
BOART LONGYEAR
26 BUTLER BOULEVARD
ADELAIDE, 5950
AUSTRALIA
INFO_AUS@BOARTLONGYEAR.COM

TEL: +61 8 8375 8375
FAX: +61 8 8375 8497

LATIN AMERICA
BOART LONGYEAR
AV. LOS LIBERTADORES 16.500 - SITIO 1-A-2
COMPLEJO INDUSTRIAL
LOS LIBERTADORES
COLINA, SANTIAGO-CHILE
INFOCHILE@BOARTLONGYEAR.COM

TEL: +56 2 595 3300
FAX: +51 242 671

EUROPE
BOART LONGYEAR
Boart Longyear Poland Sp. z o.o.
ul. Popiełuszki 30
55-080 Katy Wrocławskie, Poland

Tel: +48 661 892 800
Email: info@boartlongyear.com

